

AM307 AM319



Indoor Air Quality

Sleek, Attractive and Compact Design

AM307 measure:

- Temperature
- Humidity
- CO₂
- TVOC
- Light (Illumination)
- Motion (PIR)
- Barometric pressure

AM319 measure the above as AM307 and in addition:

- PM_{2.5}, PM₁₀
- Formaldehyde or Ozone

Both models are widely used in offices, stores, classrooms, hospitals, kindergartens, etc.

AM307 applies 4 batteries, providing up to three years battery life.

AM319 is powered by mains.

Both models are equipped with

- NFC for mobile app configuration (Android and iOS).
- USB-C and NFC is available for configuration via Notebook.

The sensors are compliant with standard LoRaWAN[®] gateways and network servers

AM307 AM319



Indoor Air Quality

Sleek, Attractive and Compact Design

Wireless transmission

Technology	LoRaWAN®
Frequency	CN470/IN865/RU864/EU868/US915/AU915/KR920/AS923
Tx Power	16dBm(868)/22dBm(915)/19dBm(470)
Sensitivity	-137dBm @300bps
LoRa class	AM307 Class A AM319 Class C

Temperature

Range	-40°C to + 85°C
Accuracy	±1°C
Resolution	0.1°C

Humidity

Range	0% to 100% RH
Accuracy	±3%
Resolution	0.5% RH

CO2 (Carbon Dioxide)

Range	400 - 5000 ppm	400 - 2000 ppm
Accuracy	±30 ppm or ±3 % of reading	±50 ppm or ±5 % of reading
Resolution	1 ppm	

Specifications are according to the manufacturer and might change without any notice

Sing Go Tech

AM307 AM319



Indoor Air Quality

Sleek, Attractive and Compact Design

TVOC (Total Volatile Organic Compound)

Range 0 - 500 (IAQ index)

Accuracy $\pm 15\%$

Motion (Passive infrared)

Detection Area 80 ° Horizontal, 55 ° Vertical

Detection Distance 5 m

Status Vacant/Occupied

Light (Illumination)

Range 60000 lux (Displayed as 6 levels, 0 to 5)

Barometric pressure

Range 300 - 1100 hPa (-40°C - 85°C)

Accuracy ± 1 hPa

Resolution 0.1 hPa

PM2.5, PM10 – AM319 only

Range 0 - 1000 $\mu\text{g}/\text{m}^3$

Accuracy 0-100 ($\pm 10\mu\text{g}/\text{m}^3$), 100-1000 ($\pm 10\%$)

Resolution 1 $\mu\text{g}/\text{m}^3$

AM307 AM319



Indoor Air Quality Sleek, Attractive and Compact Design

Formaldehyde (HCHO) – AM319 only – Choose between Formaldehyde OR Ozone

Range 0 - 6 mg/m3

Accuracy ±10 %

Resolution 0.01 mg/m3

Ozone (O3) – AM319 only – Choose between Formaldehyde OR Ozone

Range 0 - 10 ppm

Accuracy ±5 % FS (O3 electrochemical sensor working life is 2 years)

Resolution 0.01 ppm

Physical characteristics

Power supply AM307: 4 × 2700 mAh ER14505 Li-SOCl2 battery
AM319: 5V/1A by Type-C Port

Operating Temp. -20°C to +60°C (E-ink screen 0°C - 40°C)

Relative humidity 10% to 90% non-condensing

Ingress protection IP30

Dimension 100.8 × 114 × 22 mm (3.97 × 4.49 × 0.87 in)

Installation Wall mounting



Gateway UG65



Specifications are according to the manufacturer and might change without any notice

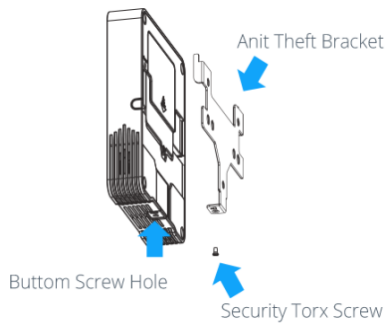
Sing Go Tech

AM307 AM319

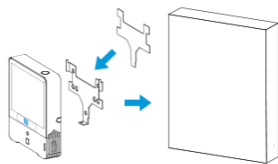


Indoor Air Quality Sleek, Attractive and Compact Design

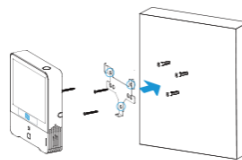
Display	
Display	4.2-inch black & white E-Ink screen
Button	1 × Power button + 1 × Reset button
LED and buzzer	1 × Traffic light status indicator + 1 × Buzzer
Configuration	Mobile App via NFC PC software via NFC or USB Type-C port



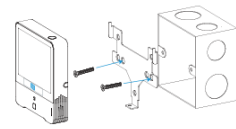
Preventing the device be taken away thoughtlessly



Fixed by 3M Tape



Wall Mounting



86Box Mounting